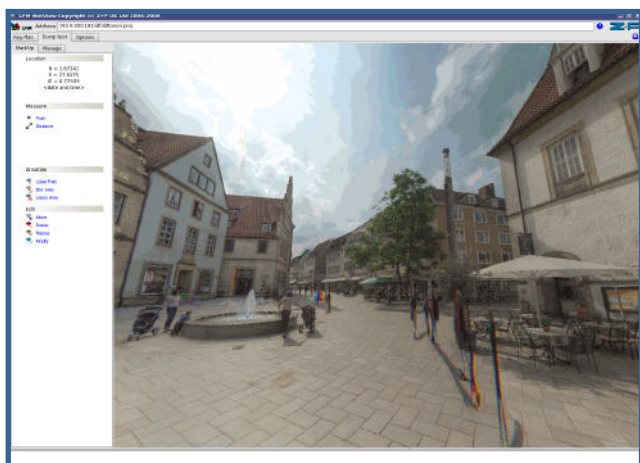




LFM NetView is an important new member of the LFM product family. Working either as a standalone application or as a plug-in to a Web browser, it provides secure Internet access to laser scan projects.

Previously, those working within Cultural Heritage could not share their laser scan data with each other without being in the same location, data which by its very nature is likely to be of interest to a number of parties across the globe.

LFM Netview resolves this issue. Complex laser scanning software can exclude those who are less familiar with laser scanning technology. LFM Netview is extremely intuitive to use, requiring little or no training. Further to this LFM is a respected brand and associated with exceptionally high quality data. The latest edition to the LFM suite does not deviate from the high quality and high functionality for which it is known.



BubbleViews show colour laser scan data at an extremely high resolution.

The accuracy and quality of some web share products suffer as there is a belief that data must be made compact in order to ensure for efficient web transfer. LFM NetView consists of innovative technology which

ensures that neither accuracy nor data resolution is lost in the process of sharing data.

Data can be viewed in an exceptionally high resolution BubbleView. These provide the user with an ability to rotate 360 around an intensity image.

The BubbleView shows the item of interest as being true to life in regards to accuracy and the colour information it can provide. A four way split screen allows users to load up to four BubbleViews or three BubbleViews and a 3D key plan simultaneously. The four way split screen can also be used to view a single point in one BubbleView from the perspective of three other scan positions.

With LFM NetView users can make measurements or place annotations on laser scan data for other users to see.

NetView also allows for a 'Master-Slave mode'. This is where one device has unidirectional control over one or more other devices. The feature allows for collaborative, team-based, multi-discipline project review sessions. This feature is unique to LFM NetView.

Z+F UK can now host laser scan data on behalf of their customers in an external, secure, dedicated server. Advanced security measures ensure the safety of the data. Unrestricted access to the data is provided, the user is afforded the opportunity to work with the remote laser scan data via LFM NetView.

NetView has been designed to link organisations from across the globe, to assist in this LFM NetView is now available in both Spanish and German versions.